

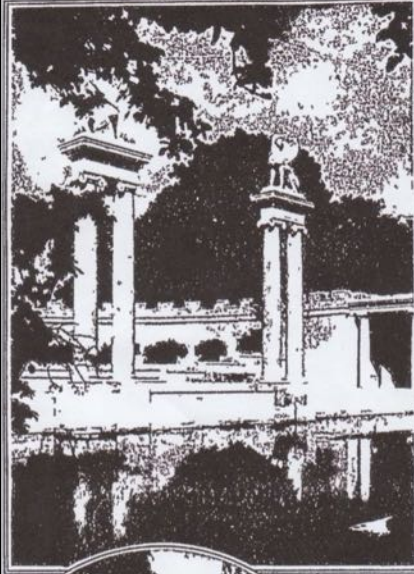
UNTERMYER GARDENS at 13

Drew Schuyler, Asst. Head Gardener



America's Most Spectacular Garden.

At Yonkers, New York, is an odd by Samuel Untermyer. This estate, called "Greyson," is the former residence of Samuel J. Tilden.



This country abounds in old-fashioned gardens,—in formal gardens,—and in gardens there are here,—even, very few of the things rare and old. The Garden of Samuel Untermyer's estate, by having a double row of trees on any of the formal paths,—the plants arranged in a row,—the blue-green of the blue-green of the early spring,—the softness of the glowing marble pillars. The three columns are an antique, and look like a large antique Greek Theater. As in all countries, gardens are planned, or planned, that have been there in gardens from early spring to late fall. There are gardens of various sizes, from which an excellent view is obtained, a view of the Hudson River, more than a mile wide at the point, over to the jagged Palisades of the river.



To illustrate such a garden as Untermyer's is a garden, it gives pleasure, relaxation and inspiration to all those who walk through its maze paths.















Reclaiming Wild Ambition Gone to Seed

Share full article



The view when entering Untermyer Gardens in Yonkers, now known as “America’s Greatest Forgotten Garden.” Librado Romero/The New York Times

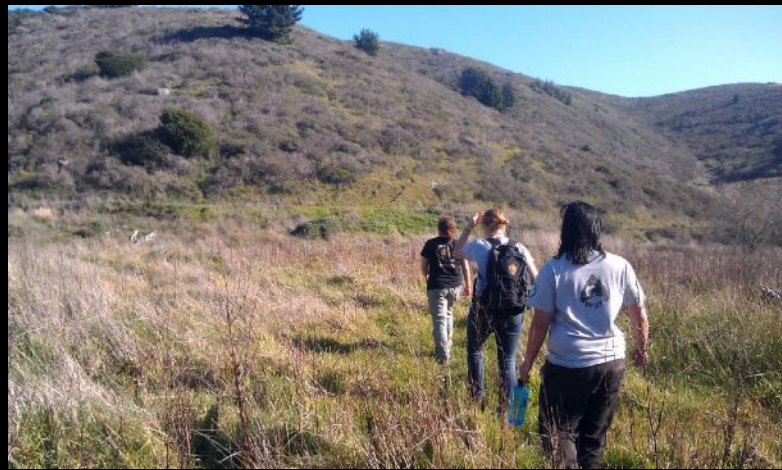
By **Eve M. Kahn**

July 19, 2012

Yonkers

FORGOTTEN NO MORE The Restoration of Untermyer Gardens



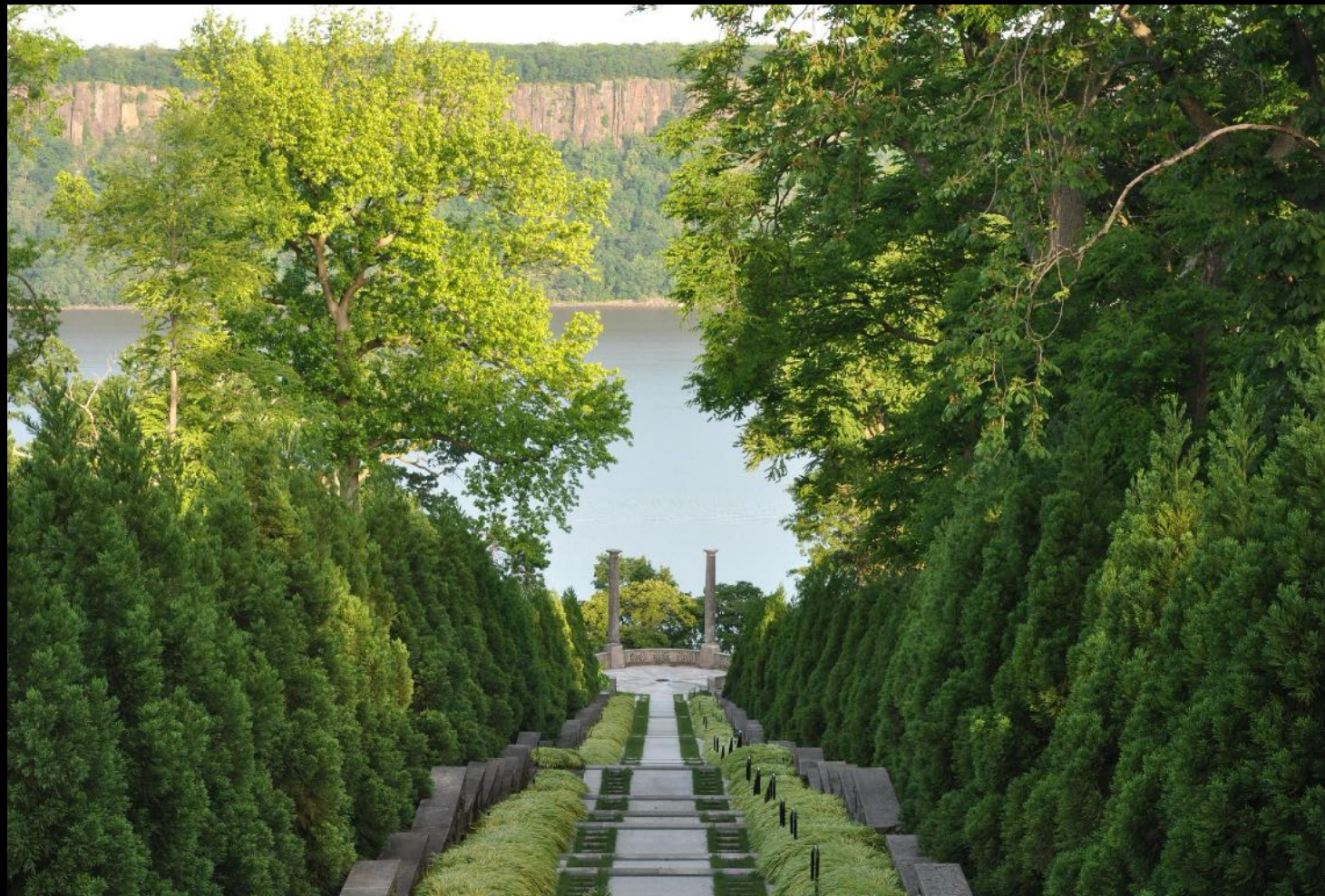




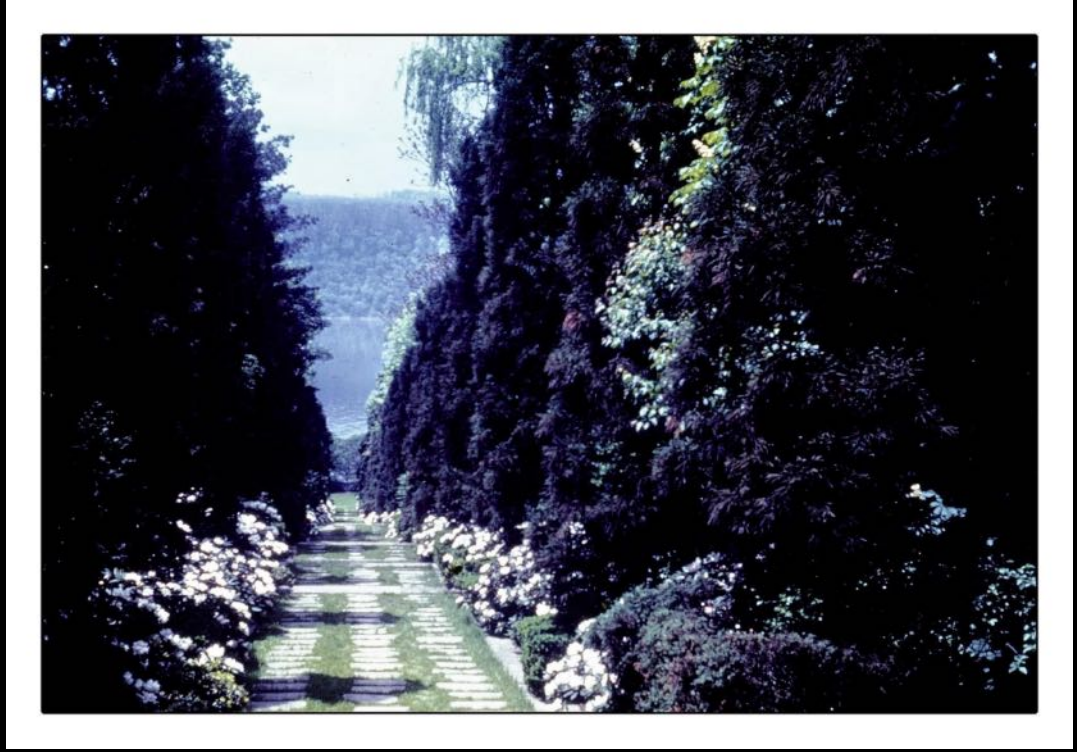


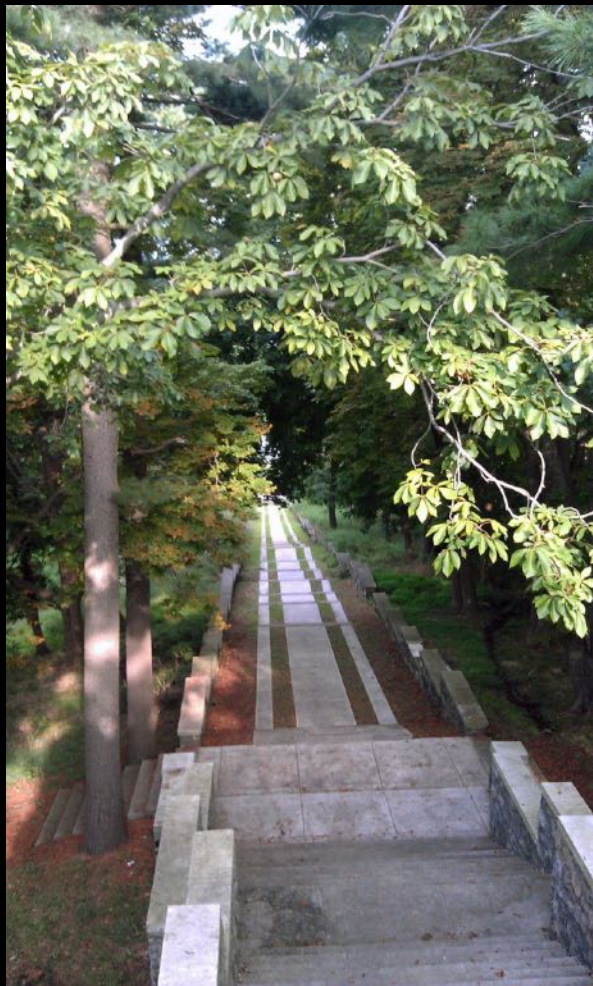
what goes here?







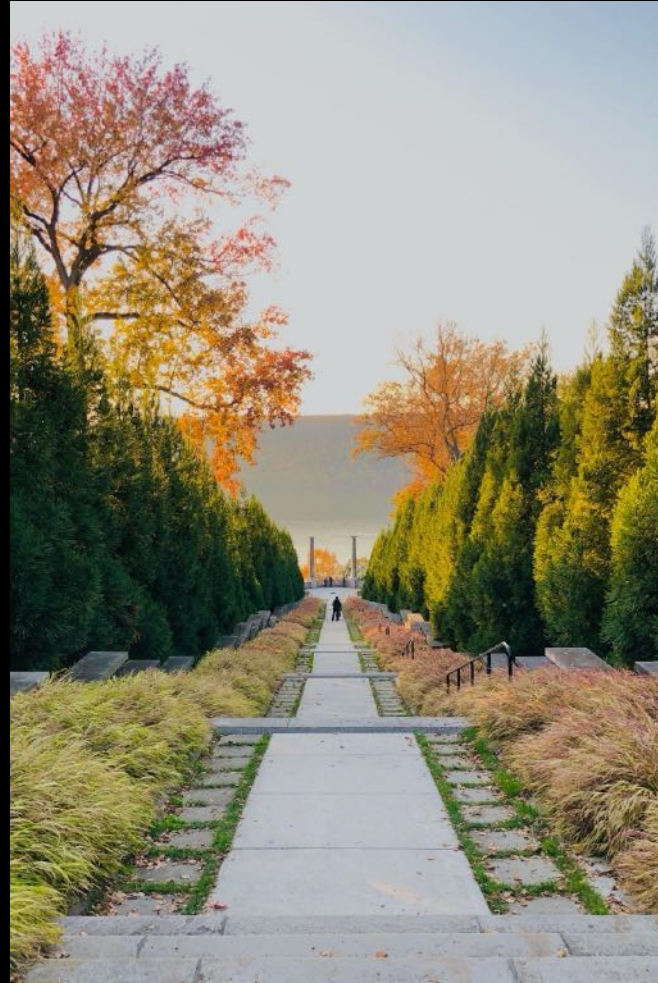












































both can be true.













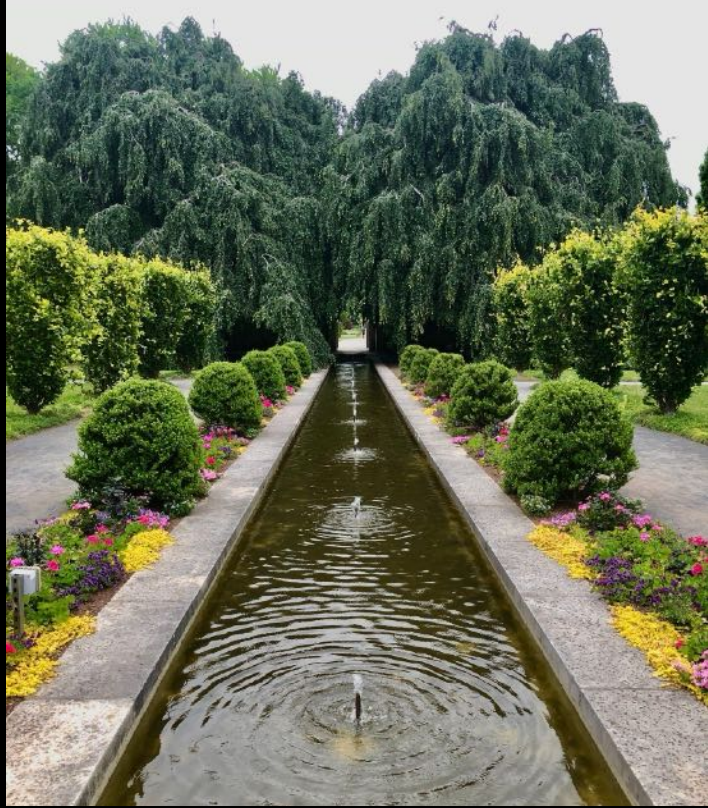




what goes here?

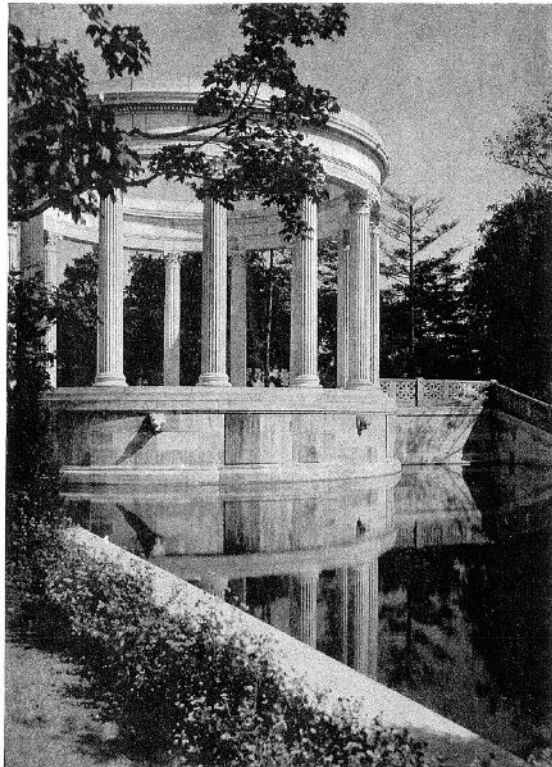












CIRCULAR COLONNADE AND SWIMMING POOL
THE GARDENS AT GREYSTONE, N. Y.
WILLIS DOSWORTH, ARCHITECT











what goes here?



















1		source	total wanted	sow date	transplant date
28	vines				
29	passiflora caerulea		20	1-Feb	
30	passiflora incarnata		20	1-Feb	
31	cobaea scandens violet	GEO	15	8-Feb	1-Mar
32	asarina joan lorraine	GEO	20	1-Mar	23-Mar
33	chaenorrhinum origanifolium summer skies	IG	20	1-Mar	1-Apr
34	eccremocarpus tresco mix	IG	20	1-Mar	1-Apr
35	rhodochiton atrosanguineum	GEO	20	15-Mar	
36	ipomoea cardinal climber	GEO	15	1-Apr	13-Apr
37					
38	fun stuff				
39	digitalis obscura sunset	IG	60	25-Jan	15-Mar
40	gomphocarpus physocarpus oscar	IG	60	25-Jan	9-Apr
41	stipa sirocco	Outside pride	15	8-Feb	9-Apr
42	heliotrope Marine Mini	GEO	45	15-Feb	15-Mar
43	cerinthe major Kiwi Blue	GEO	45	15-Feb	1-Mar
44	solanum integrifolium pumpkin on a stick	Shobha	30	15-Mar	1-Apr
45	ammi dara	IG	30	1-Apr	
46	emilia scarlet magic	IG	60	1-Apr	
47	nicotiana peach screamer	Uprising	60	1-Apr	
48	cosmos apricot lemonade	GEO	60	1-Apr	9-Apr
49	cosmos sulphureus yellow	Gelene	60	1-Apr	
50	tagetes cinnabar	dixter	15	1-Apr	13-Apr
51	okra two kinds	Shobha	30	15-Apr	
52	bitter melon two kinds	Shobha	30	15-Apr	
53	hibiscus mahogany splendor	IG	30	15-Apr	
54					
55					
56	PERENNIALS				
57	achillea filipendula cloth of gold	GEO	30	8-Feb	
58	adenophora liliifolia	IG	30	25-Jan	
59	agastache astello indigo	GEO	30	8-Feb	
60	agastache heather queen	GEO	30	8-Feb	
61	alchemilla mollis thriller	GEO	30	8-Feb	
62	asparagus verticillatus	IG	30	1-Feb	













what goes here?

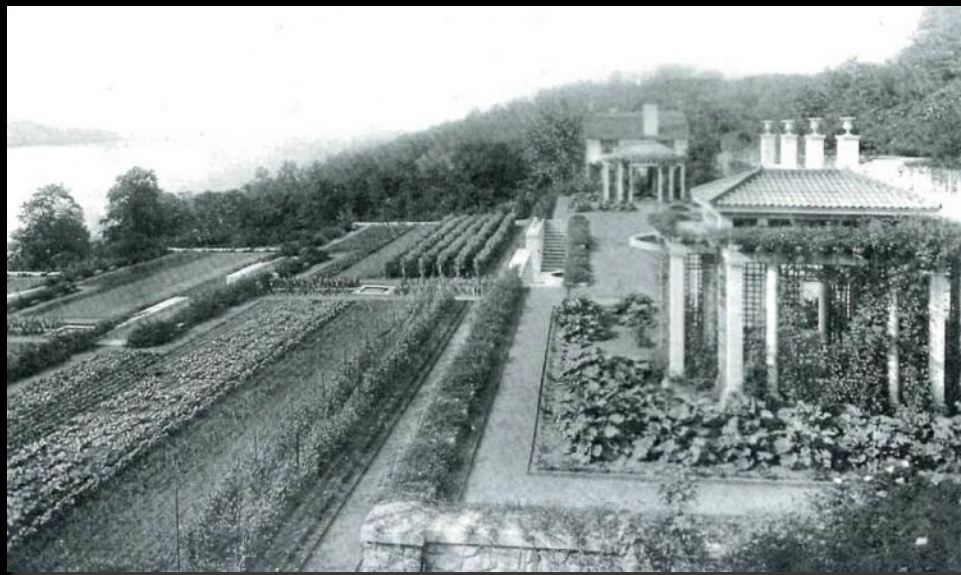


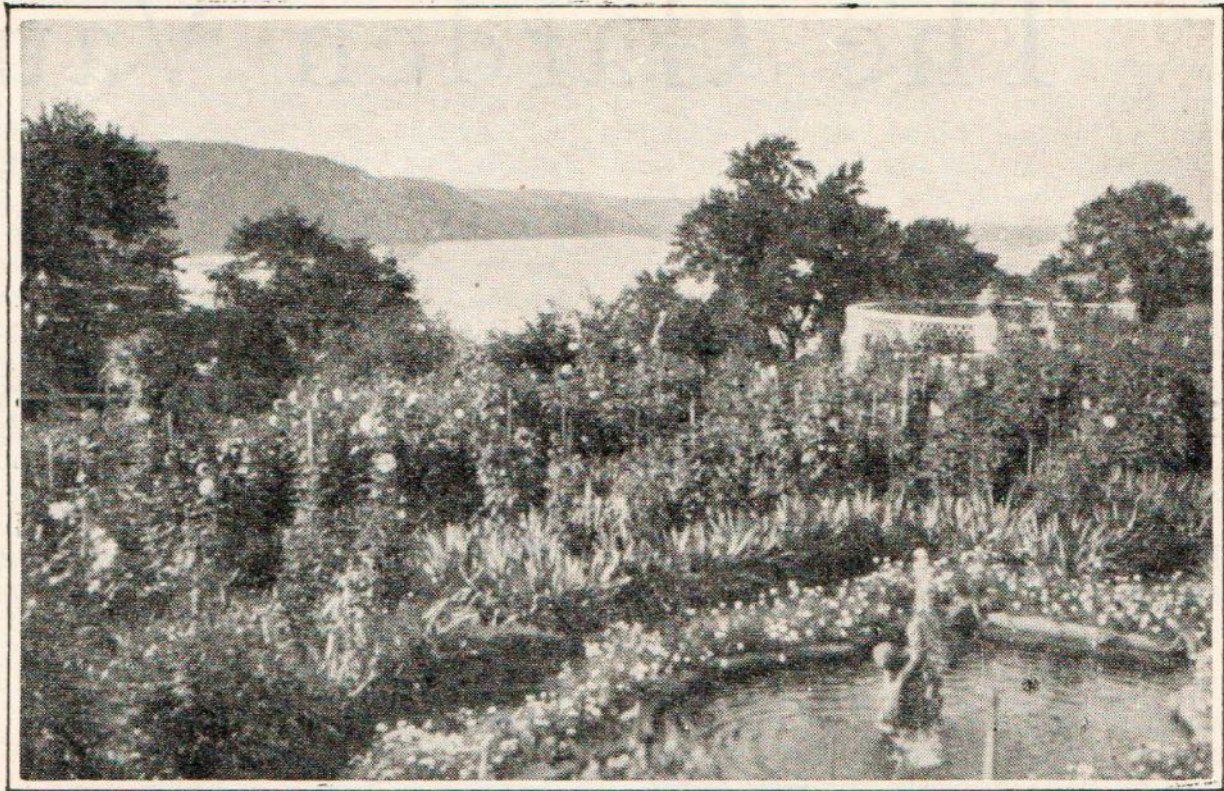












The dahlia garden with the Hudson river in the background





what goes here?

YOUTH HORTICULTURE INITIATIVE































The "Devil's Cave" at Untermyer Park, Yonkers, scene of satanic rituals.





what goes here?











what goes here?



Thank You!

Photo credits: John Jacono & Jessica Norman