



# Pennsylvania Horticultural Society

PHS: Transforming Lives Through Horticulture

Andrew Bunting, VP of Horticulture, Pennsylvania Horticultural Society | February 16, 2023





# ABOUT PHS



## Vision of PHS

- The Pennsylvania Horticultural Society uses horticulture to advance the health and well-being of the Greater Philadelphia region.
- We are a diverse community of people and organizations who believe in the power of horticulture to make positive social and environmental change.
- PHS believes that gardening and horticulture belong to everyone.

# PHS Impact Priorities

PHS uses horticulture to increase four building blocks of health and well-being



Creating healthy living environments



Increasing access to fresh food



Building meaningful social connections



Expanding economic opportunity



# Delivering Impact Through Three Program Channels



**Public Gardens and Landscapes**



**Healthy Neighborhoods**



**Shows and Events**



## Gardening for the Greater Good

- **Celebrate Gardening**
  - Plant what you love
  - Almost any space can be a garden
- **Choose your plants with intention**
  - Choose plants that are beneficial to wildlife
  - Choose organic
- **See your garden as part of the ecosystem**
  - Compost
  - Go electric
- **Embrace a sharing mindset**
  - Donate produce
  - Mentor and share knowledge



# Public Gardens and Landscapes

## Program Portfolio



**PUBLIC  
GARDENS**



**PUBLIC  
LANDSCAPES**



**URBAN  
ACTIVATION**

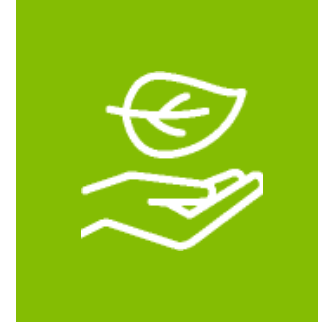
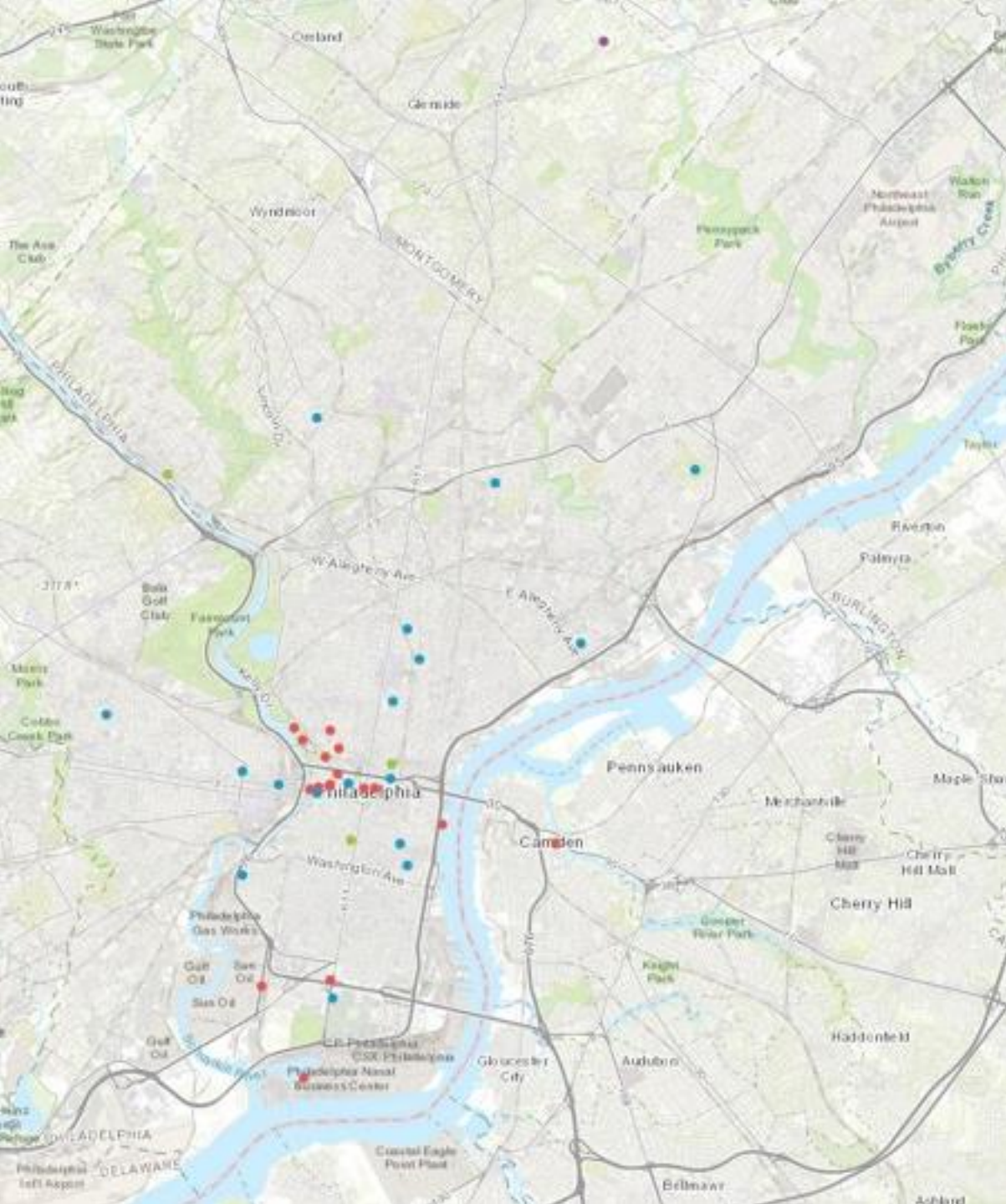


**ORNAMENTAL  
GARDENING  
EXPERTISE**

# PUBLIC GARDENS AND LANDSCAPES







## PHS Gardens and Landscapes Network

- Azalea Garden
- Delaware River Waterfront Corporation
- Eastern State Penitentiary
- JFK Blvd.
- Logan Circle
- Manayunk Pop Up Garden
- Meadowbrook Farm
- North Broad Street containers
- PECO greenroof
- Pennsylvania Convention Center
- Philadelphia Museum of Art
- Philadelphia Sports Complexes Special Services District
- PHS Headquarters and Gas Station
- Rodin Museum
- South Street Pop Up Garden
- Subaru America Campus
- The Gateway Garden at Drexel
- The Navy Yard
- 26<sup>th</sup> Street Gateway





## Public Gardens and Landscapes Purpose

- Design, create and operate gardens in the public realm that embody the Gardening for the Greater Good principles that make horticulture accessible to all
- Create dynamic places to acquire and engage new members





## Public Gardens and Landscapes Team

- Began in 1987 as Center City Green
- Created to preserve and enhance our city's most valuable urban spaces
- Manage and maintain landscapes for clients as well as Legacy Landscapes
- Act as a liaison between client/landowner and contractor/gardeners
- Infuse sites with interesting horticulture
- Engage public
- Push aesthetic that is both beautiful and ecologically beneficial





**PHS designs and maintains over 80 acres of public gardens and landscapes throughout the Philadelphia region**

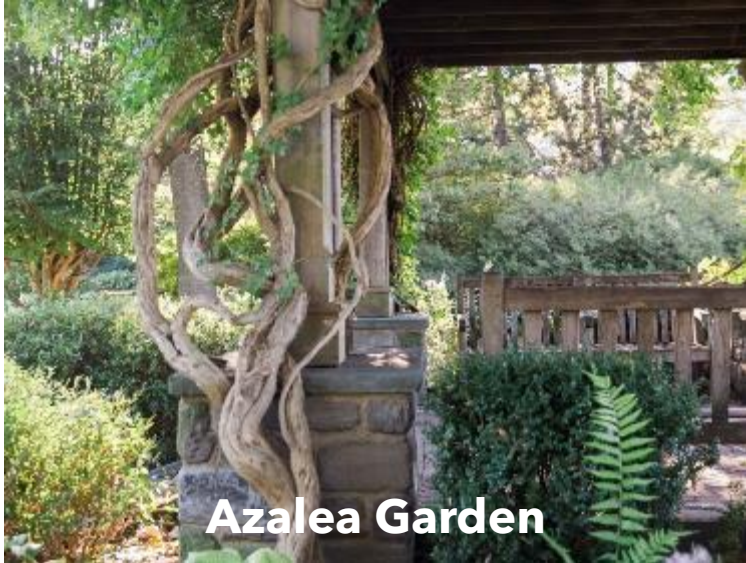




# PUBLIC GARDENS







**Azalea Garden**



**Meadowbrook Farm**

**PHS designs and maintains public gardens throughout region**



**Meadowbrook Farm**



**Pop Up Garden in Manayunk**





## Meadowbrook Farm

- 25-acre garden property that was entrusted to PHS by the late J. Liddon Pennock, Jr. in 2004
- Located in Abington Township (13 miles from Philadelphia)
- Maintained by PHS's expert horticulturists
- Meadowbrook Farm offers free admission for guests
- Open April - October



# Meadowbrook Farm









# PUBLIC LANDSCAPES

---

Creating  
healthy living  
environments



Building  
meaningful  
social connections





A commitment to improving public landscapes is essential to PHS's mission.

PHS gardeners address green issues when developing and managing local parks and the rebuilding of public spaces.







## Logan Square

- Logan Square is one of nearly 20 public gardens and landscapes maintained by PHS across the Philadelphia region.
- This historic city landmark is brought to life with seasonal plantings by PHS.
- In Spring of 2022, an array of 70,000 rainbow-colored tulip bulbs bloomed. This colorful and eye-catching design was inspired by the Keukenhof tulip gardens in Lisse, Netherlands.





The Academy of Natural Sciences  
Drexel University

The Academy of Natural Sciences  
Drexel University

Gideon Mendel  
Drowning World  
May 1 - Oct 27

The Academy of Natural Sciences  
Drexel University

LIFE BEFORE DINOSAURS  
From 25,000 BC to 67,000 BC





# PECO Greenroof









# Subaru of America Campus









# The Philadelphia Navy Yard







## The Philadelphia Navy Yard

- Fee for service project since 2016
- Over 20 acres of park and 1,200 of campus
- Named "Coolest shipyard in America" - POLITICO
- Transforming conventional office campus with naturalistic, biodiverse, large-scale plantings
- Designing for deer resistance and year-round interest
- Secured Level 1 Arboretum Status - Fall 2019
- Annual planting of 10 or more trees
- Collection includes 3 large *Ulmus americana*
- Introducing more native tree species each year, such as *Nyssa sylvatica*, *Amelanchier laevis*, *Halesia tetraptera*, *Taxodium distichum* and more



# Eastern State Penitentiary





# Historic Gas Station





# Philadelphia Museum of Art and Rodin Museum





# URBAN ACTIVATION







## Urban Activation

The Pennsylvania Horticultural Society works in the region to activate urban spaces and make them a vibrant and vital part of neighborhoods.

Using horticulture as the foundation of a space's design and public programming, PHS helps create social connections and provides healthy living environments.





# Activities



# PHS POP UP GARDENS



**Manayunk**



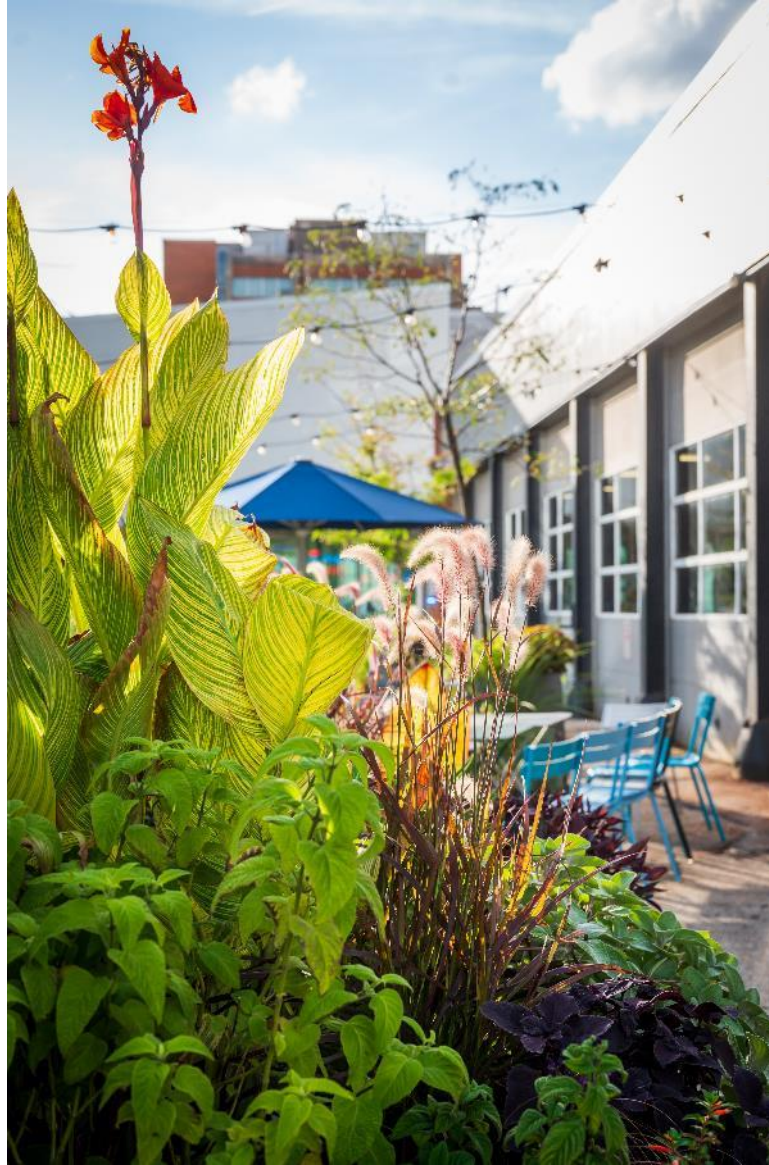
**South Street**



# Manayunk Pop Up







# Drexel Gateway Garden



# Drexel Gateway Garden





# ORNAMENTAL GARDENING EXPERTISE

Creating  
healthy living  
environments



Building  
meaningful  
social connections







# Outstanding Plants for the Mid-Atlantic Garden



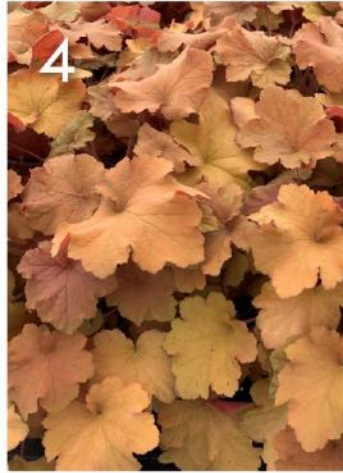


## What Makes a Plant a “Gold Medal Plant”?

- Ease of cultivation
- Multiple seasons of interest
- Commercial availability
- Appropriateness for the Mid-Atlantic region
- Value to wildlife



# 2022 PHS Gold Medal Winners



## 1 *Abelia x grandiflora* 'Little Richard', glossy abelia

An ornamental shrub with alluring small, white flowers that bloom in late spring and early summer. In the fall, the foliage of this evergreen shrub changes to an orange-pink hue. 'Little Richard' is a fast-growing shrub that grows exceptionally well in containers, is deer resistant, and attracts pollinators.

Ornamental shrub, 2'-3'. Zones 6-9.



## 2 *Acer x freemanii* Autumn Blaze®, Freeman maple

A large native shade tree that has spectacular orange-red fall foliage. This native cultivar will cool surrounding temperatures, benefiting the environment by attracting native birds. It is also deer resistant. Autumn Blaze is tolerant of dry and wet soils.

Deciduous tree, 50'-60'. Zones 4-8.



## 3 *Cornus kousa* Scarlet Fire®, Kousa dogwood

A flowering dogwood with magnificent, fuchsia-colored flowers. Scarlet Fire adapts very well in many different climates and soils. It is a medium-growing tree that blooms within two years of being planted. Scarlet Fire is a relatively new addition to the ornamental landscape with its deer and disease resistant tolerance.

Deciduous tree, 15'-30'. Zones 5-8.



## 4 *Heuchera* 'Caramel', coral bells

A perennial that works well in the landscape as a ground cover or for massing in the perennial border. 'Caramel' is a vigorous, clump-forming coral bells cultivar that features unique apricot foliage. It provides three seasons of interest: spring, summer, and fall. 'Caramel' is deer resistant.

Herbaceous perennial, 8". Zones 4-9.



## 5 *Ilex opaca* 'Maryland Dwarf', American holly

A sun-loving, low-growing native holly that is shade tolerant and grows well in average to somewhat moist soil. This exceptional holly has broad spreading leaves that boost winter interest in the garden and landscape. It is beautiful in small garden spaces.

Evergreen tree, 4'-12'. Zones 6-9.



## 6 *Pycnanthemum muticum*, mountain mint

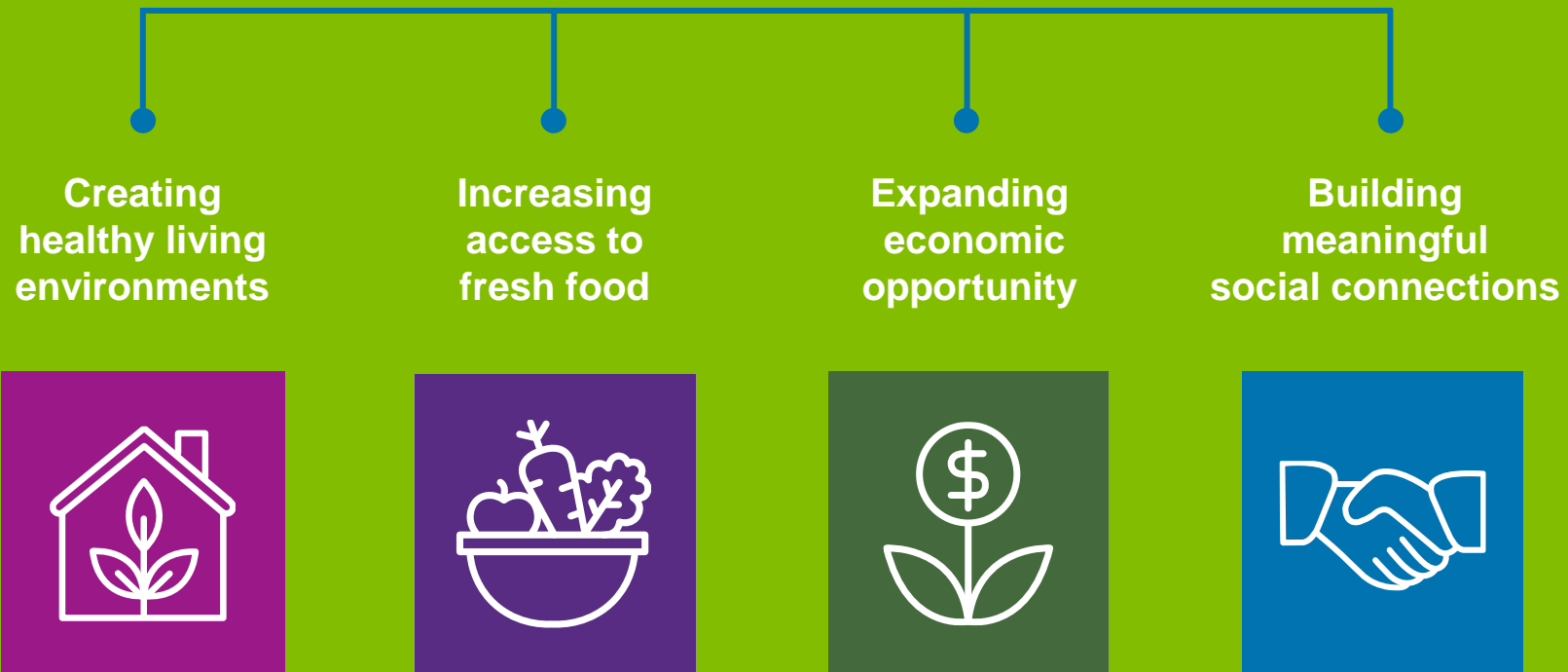
A fragrant perennial with dark green leaves that taste like peppermint when crushed. This vigorous grower is not invasive like most other mints. It grows best in moist to medium moist soils, can be planted in meadows, and is a fantastic addition to a perennial garden. It also attracts pollinators and is one of the best perennials for deer resistance.

Aromatic perennial, 2'-3'. Zones 4-8.





# HEALTHY NEIGHBORHOODS





# Healthy Neighborhoods

PHS Impact Priority Programs that Make Neighborhoods Healthy and Vibrant



**Community Gardens**



**Tree Programs**



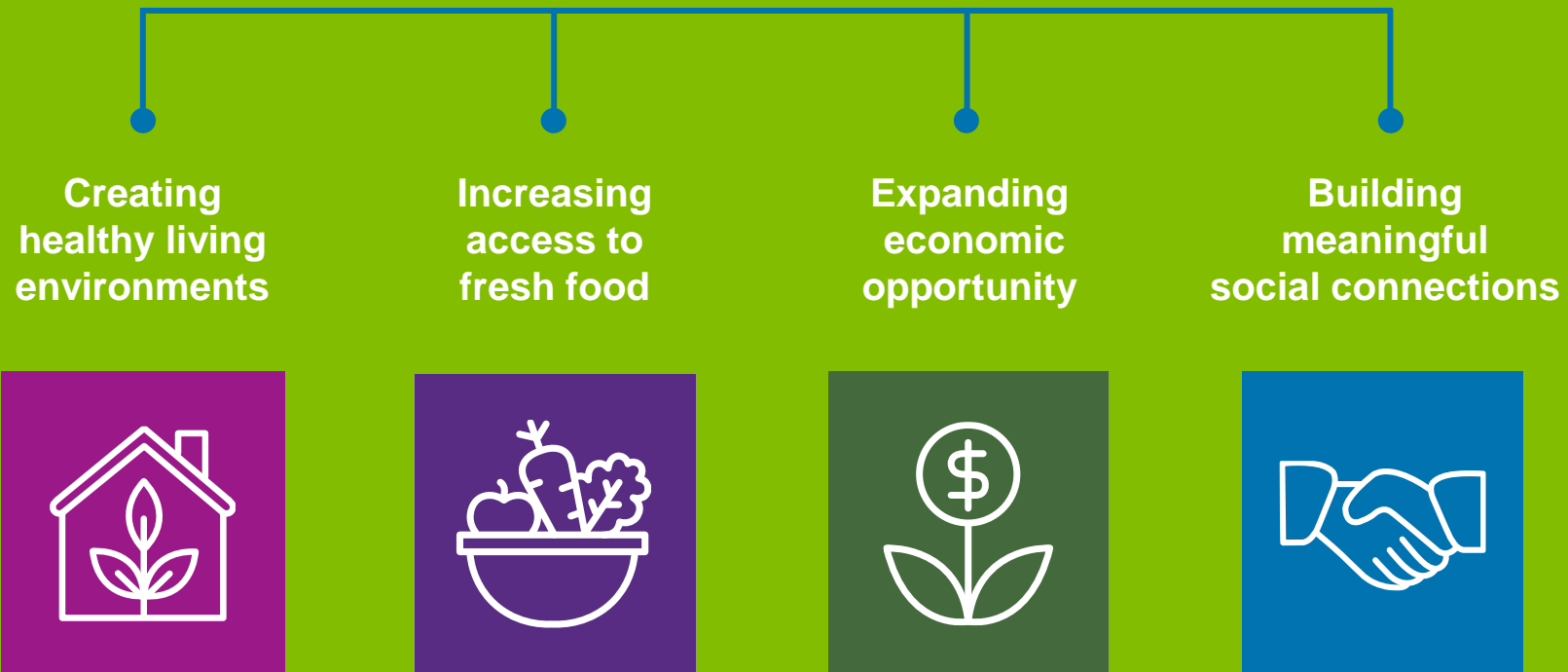
**Stormwater Solutions**



**Transforming Vacant Land and Workforce Development**



# COMMUNITY GARDENS







## Community Gardens

- Community gardens increase access to fresh produce while strengthening social connections between neighbors.
- PHS provides gardening materials, access to tools and other supports to help over 170 community gardens improve quality of life in their neighborhoods.
- Offers gardening workshops throughout the year taught by local leaders in the gardening community.
- With our partners at [Neighborhood Gardens Trust](#), we work with community gardens to protect open spaces.





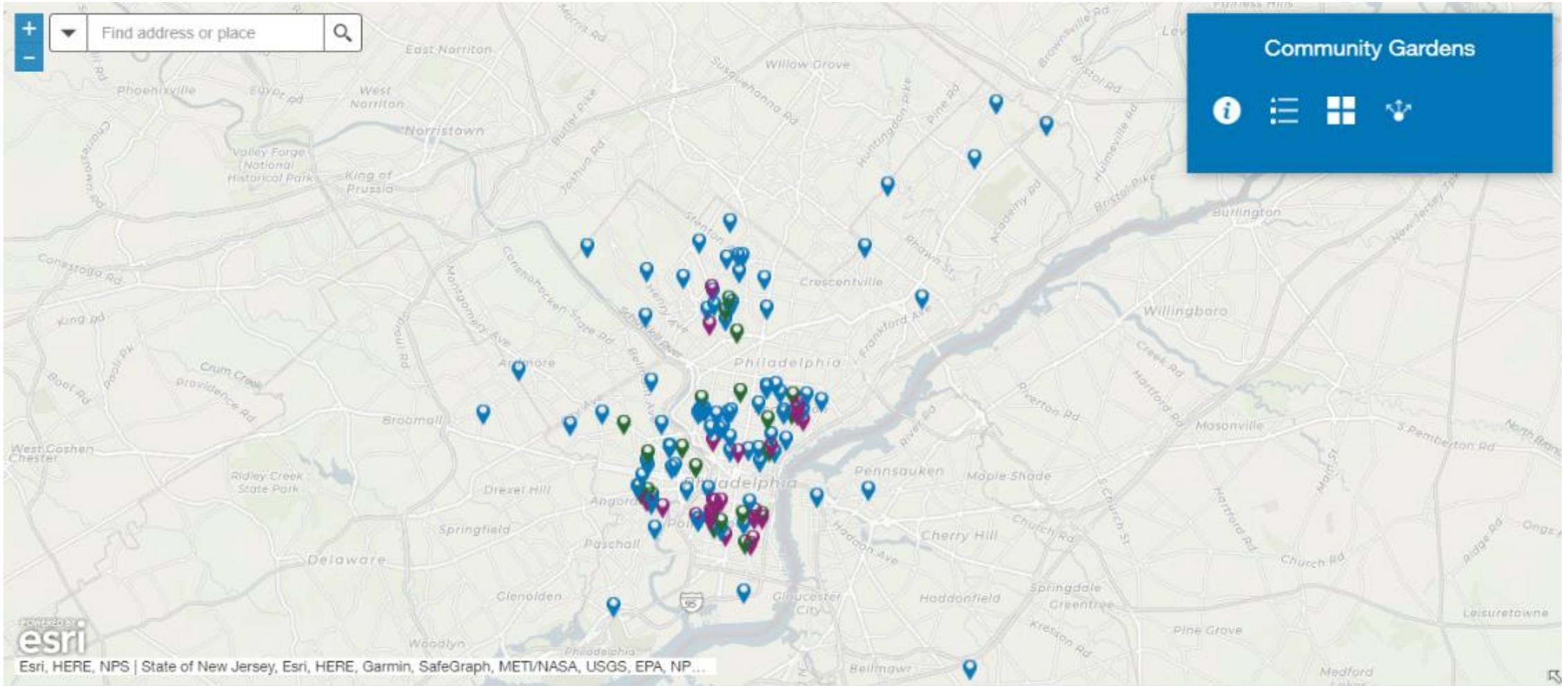


## Building More Resilient Communities

- Community and cooperative gardens are assets to our cities
- Increase access to fresh produce
- Elevate food sovereignty especially in under resourced or disenfranchised communities
- Build social cohesion
- Preserve and celebrate cultures



# Community Gardens in the PHS Network





# PHS Community Gardens Support

	Emerging Gardens	Established Gardens	Mature Gardens
PHS Garden Tenders & Growing Organic Workshop Series	●	●	●
Supplies & Materials	●	●	●
Access to Tool Library	●	●	●
Technical Assistance	●	●	●
Volunteer Assistance	●	●	●
PHS Leadership Workshop Series		●	●
Capital Improvements		●	●
Soil Testing	●		





# City Harvest

- Program to support over 120 community gardens to grow and donate produce to local food pantries or share the crops with their community
- City Harvest gardens have free access to resources like education and tool libraries
- Five (5) Green Resource Centers operate in partnership with local community partners
- Gardens receive help to increase production and distribute organic, culturally relevant, and locally grown produce
- City Harvest sites receive organic vegetable seedlings, direct sow seeds, organic pest control supplies, and other items





# City Harvest

## Benefits of Being a City Harvest Site



**Provides  
Gardening  
Materials**



**Technical  
Support**



**Organic Seeds,  
Seedlings,  
and Supplies**

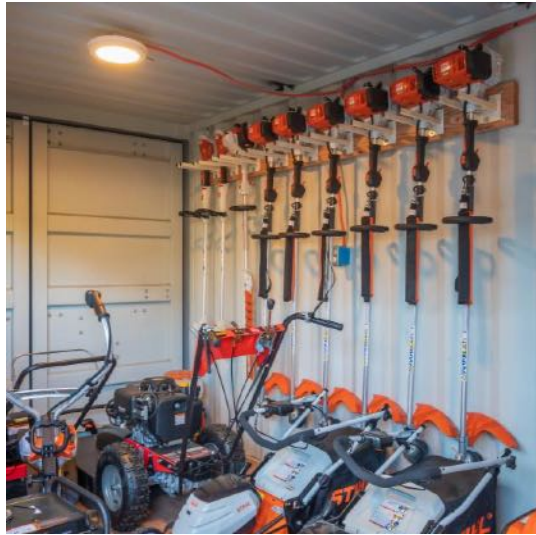


**Community  
Partnerships for  
Donation**





# PHS Tool Library





# Green Resource Center at Strawberry Mansion





# PHS Green Resource Center at Farm Park





# TREE PROGRAMS

**Creating  
healthy living  
environments**



**Building  
meaningful  
social connections**







**Philadelphia only has 20% tree canopy coverage and as little as 2.5% in some neighborhoods -- 30% is a healthy goal.**

**PHS is committed to increasing the canopy, especially in neighborhoods with few trees and high average temperatures.**







**PHS works to increase tree canopy by planting thousands of trees in the region through its programs**





# Tree Programs

Works Within Communities and with Partners to Increase Tree Canopy Throughout Region



**Tree Tenders**



**Watershed Programs**



**Partnership Programs**





# Tree Tenders

- Training 6,000+ volunteers to plant and take care of trees throughout the region
- Semi-annual trainings
- Bilingual training in Spanish
- 2,881 street trees planted in fiscal year 2022 with help from 112 planting groups
- Tree Checkers
- Over 25,000 trees have been planted since 1991



# STORMWATER SOLUTIONS

---

Creating  
healthy living  
environments







## Stormwater Solutions

- Stormwater runoff can overwhelm a city's sewer system. This results in overflow into our rivers and streams, harming the region's waterways.
- PHS manages the Philadelphia Water Department's (PWD) Rain Check program, which provides an innovative way to water your garden and improve your property while decreasing stormwater runoff.
- Since 2014, over 6,000 residents have learned about stormwater management through the Rain Check program.

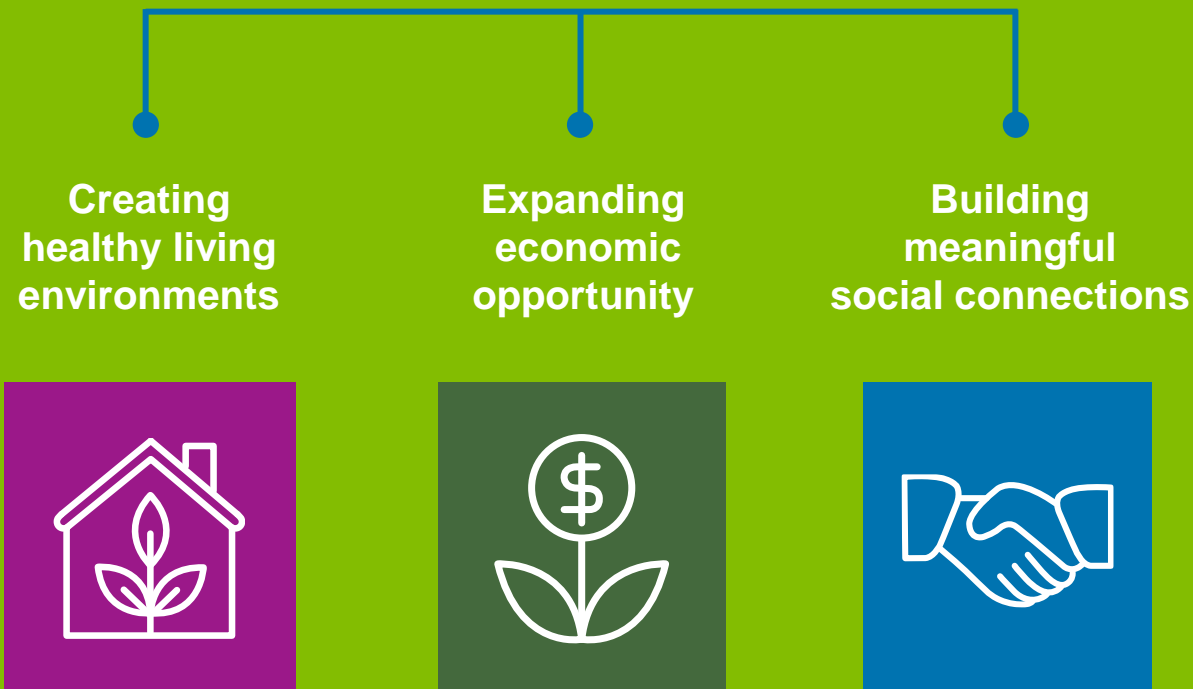




**Garden improvements to decrease stormwater runoff**



# TRANSFORMING VACANT LAND AND WORKFORCE DEVELOPMENT







40,000  
Vacant Lots















13,000  
LandCare Lots







## PHS Philadelphia LandCare

- PHS uses gardening and landscaping to clean, green, and maintain vacant lots.
- PHS Philadelphia LandCare replaces trash and weeds with grass, trees, and plants in 13,000 lots.
- With support from the City of Philadelphia, PHS partners with a network of contractors and community groups who hire local residents to turn vacant lots into a positive public green space.
- These spaces create lasting benefits including decreased gun violence and improved mental health.





# Philadelphia LandCare

## Stabilization Process



**Major trash, debris,  
and weed removal**



**Site grading,  
amendment,  
seeding**



**Fence  
installation**

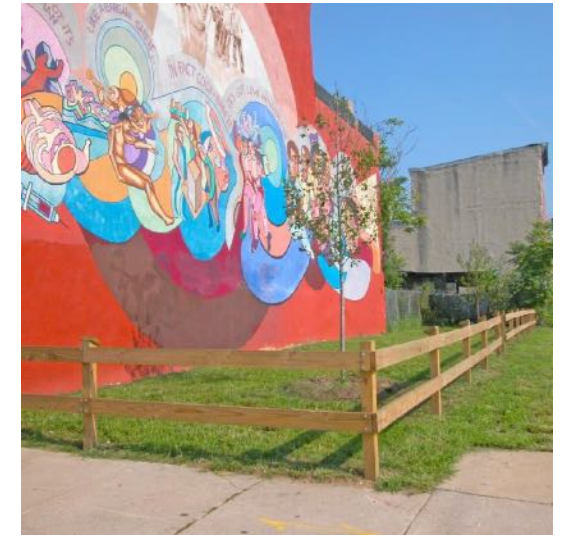


**Tree planting**





**Hires city-based  
landscape contractors  
and community  
groups to clean and  
mow lots twice per  
month from April  
through October**





# 4th and Cecil B. Moore Ave.



**Before**



**After**



# Peace Garden – 1308 S. 29th St



**Before**



**After**



# Communities Using LandCare Lots





# PHS Workforce Development

Receive Paid Training and Learn New Skills



**Horticulture**



**Landscape  
Maintenance**



**Leadership  
Training**



**OSHA 10  
Certificate**





## Workforce Development

- 19 Community LandCare Partners
- 15 Local contractors
- Hires about 300 people per year to clean and green lots







## Workforce Development

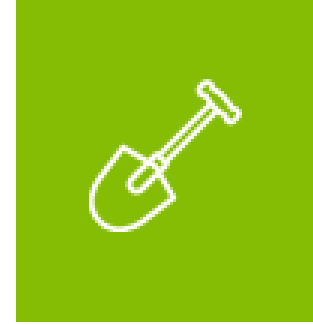
### Same Day Work and Pay

- Over 3,800 daily jobs
- 7 community partners

### Bootcamp trainings

- Spring 2022: 40 graduates, over 80% placed in jobs with LandCare employer partners





## Landscape Technician Bootcamp

- Includes a 2-week paid apprenticeship and may include employment placement with private contractors and other industry partners
- Case management services
- Leadership training
- Transpass provided - SEPTA Key Card

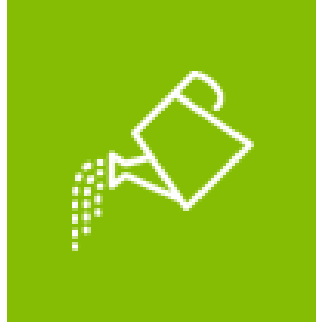




**“I see positive changes in these guys. Some of them have moved on to jobs at the Water Department, the Convention Center. I see guys saving money to buy homes. They become productive citizens, they put down roots and invest in the communities they live.”**

**Donahue Thomas, Owner of Cherry Blossoms Landscaping**





## Benefits of PHS Philadelphia LandCare

- Reduction in gun violence
- Increase in mental health
- Decreases feelings of stress and depression
- Benefits local economy by hiring local contractors







**PNAS** Proceedings of the National Academy of Sciences of the United States of America

Keyword, Author, c

Home Articles Front Matter News Podcasts Authors

**RESEARCH ARTICLE**

**Citywide cluster randomized trial to restore blighted vacant land and its effects on violence, crime, and fear**

Charles C. Branas, Eugenia South, Michelle C. Kondo, Bernadette C. Hohl, Philippe Bourgois, ...

Check for updates

JAMA Network | **Open**

Original Investigation | Public Health

**Effect of Greening Vacant Land on Mental Health of Community-Dwelling Adults**  
A Cluster Randomized Trial

Eugenia C. South, MD, MS; Bernadette C. Hohl, PhD; Michelle C. Kondo, PhD; John M. MacDonald, PhD; Charles C. Branas, PhD



# *The Nature Health Connection: Research by Nature Sacred, Dr. Eugenia South, and The Pennsylvania Horticultural Society*



- Compiles recent evidence underscoring the health benefits of nature
- Focuses on the impact of green space in our communities on mental health, physical health, social cohesion, and crime and perceptions of safety
- Highlights innovative programs that promote access to green space in urban environments, including PHS's LandCare program





## Key Findings

### **People with more nature in their immediate living environment experienced:**

- Fewer mental health disorders
- Lower stress levels
- Fewer instances of burnout and mental fatigue
- Fewer instances of aggressive behavior
- Fewer instances of cardiovascular diseases and cardio-metabolic conditions such as heart attack, coronary heart disease, heart failure, irregular heartbeat, and hypertension





## Key Findings (cont.)

- More greenspace has been linked to a greater sense of belonging, social cohesion, and cooperation between neighborhoods
- After cleaning and greening vacant lots, crime rates dropped 29% in the poorest neighborhoods, with residents in these areas reporting feeling much safer



# PHILADELPHIA FLOWER SHOW





# PHS Philadelphia Flower Show

An award-winning,  
globally recognized  
annual horticultural event







## Historic 2021 and 2022 Flower Shows

- In 2021 and 2022, for the first time in The Flower Show's 193-year history, the Show pivoted to being held outdoors.
- Held at Philadelphia's Franklin Delano Roosevelt Park to adapt to COVID-19 needs.
- These two historic shows reimagined the Flower Show over a 15-acre scenic backdrop, and incorporated new ancillary events, food and beverage options, shopping, and entertainment.







## Historic 2021 and 2022 Flower Shows (cont.)

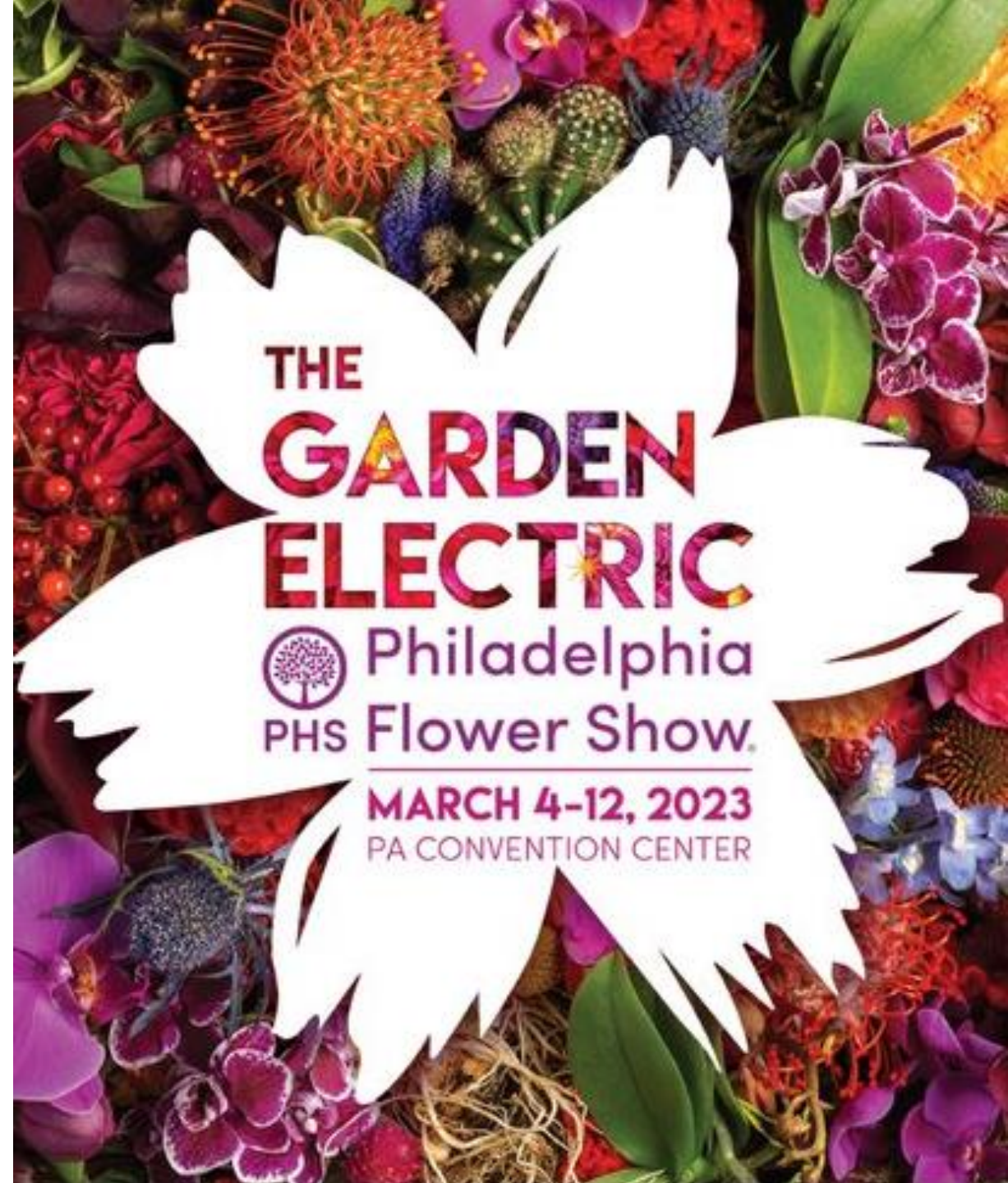
- The 2021 show theme was “Habitat: Nature’s Masterpiece,” and in 2022, the show’s theme was “In Full Bloom.”
- These themes encouraged all to celebrate gardening and horticulture and see its impact in their lives in a timely, relevant, and exciting new way.





## 2023 Philadelphia Flower Show

- Started in 1829, the Flower Show is both the nation's largest and the world's longest-running horticultural event.
- Proceeds from the Flower Show support PHS's year-round work to advance health and well-being through horticulture, including planting and caring for trees, establishing and maintaining community gardens, and cleaning and greening vacant land.





# 2023 PHS Philadelphia Flower Show



*Rehman*









## Interested in Learning More?

- For more information about PHS and our work, scan the QR Code.



A photograph of an outdoor patio area. In the foreground, there is a wooden pergola with several horizontal slats. The pergola is surrounded by lush greenery, including trees and bushes. Several large, dome-shaped pendant lights hang from the pergola. In the background, there are more trees and a building. The overall scene is bright and sunny.

# Stay In Contact With Us!

**Name: Andrew Bunting | Name: [abunting@Pennhort.org](mailto:abunting@Pennhort.org) | [PHSonline.org](http://PHSonline.org)**





# thank you

@PHSgardening • #GardeningforGood



[PHSONline.org](http://PHSONline.org)